



GitLab

Metrics in a company-led open source project

Ray Paik

1 February, 2019

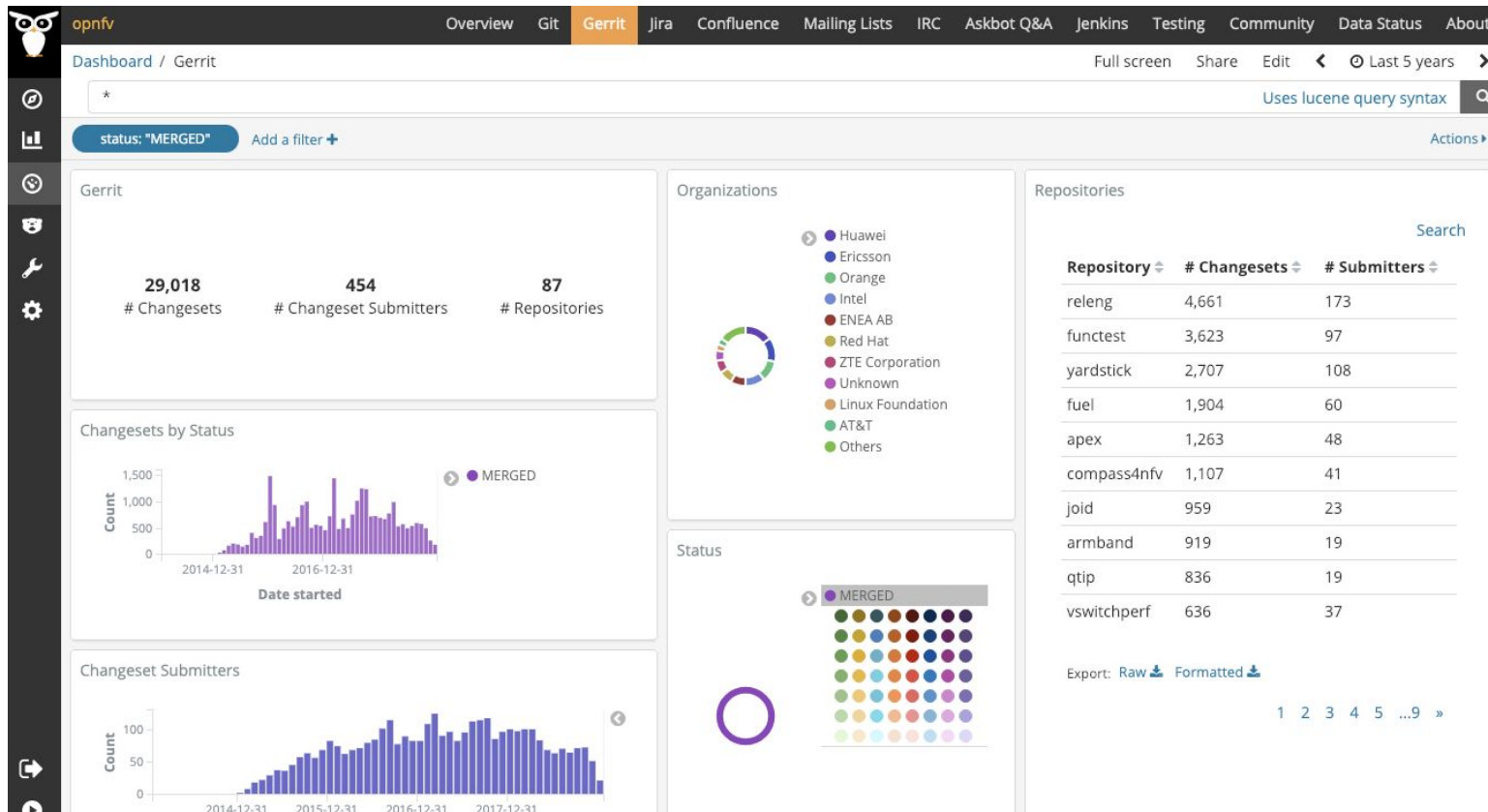
~ everyone can contribute ~

Agenda



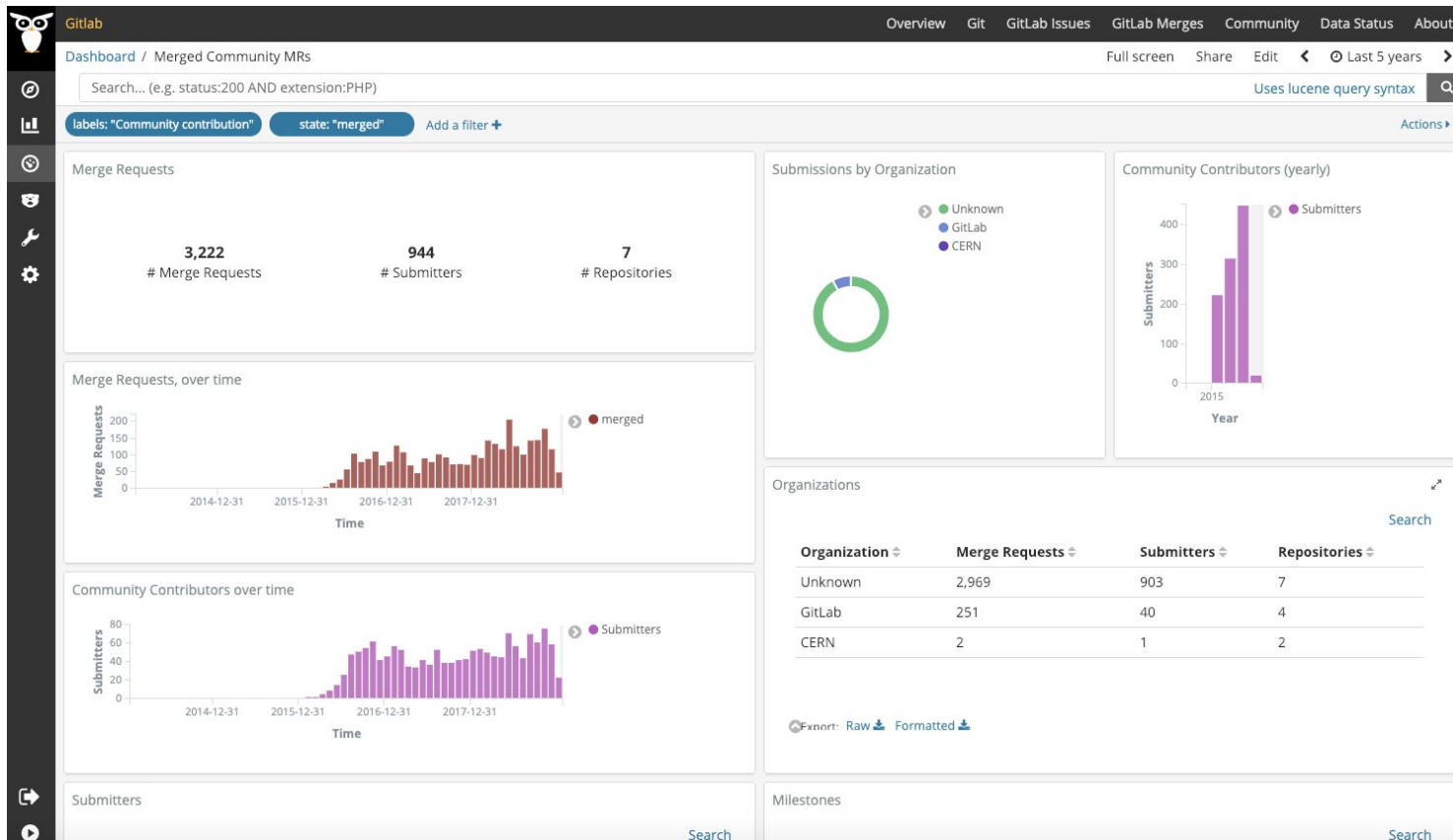
- My community until June 22, 2018
- My new community
- What's different in a company-led open source project?
- Metrics that I focus on today

My community view until June 22, 2019



<https://opnfv.biterrg.io/>

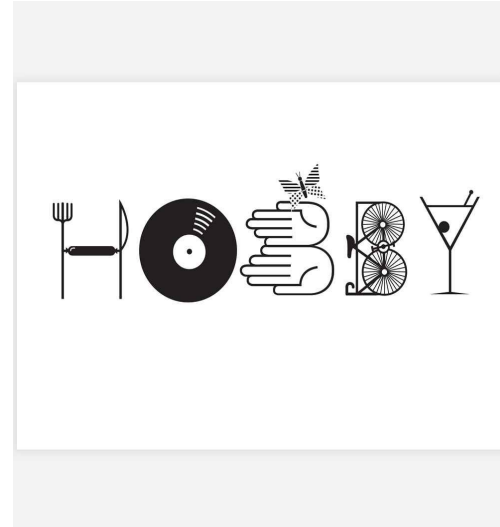
GitLab contributor community



<https://gitlab.biterg.io/>

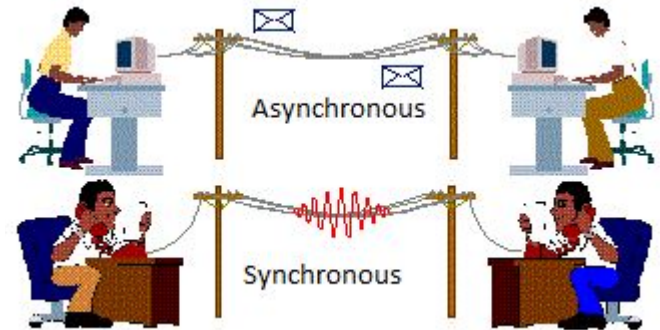
So, what's different?

- Motivation for contributing

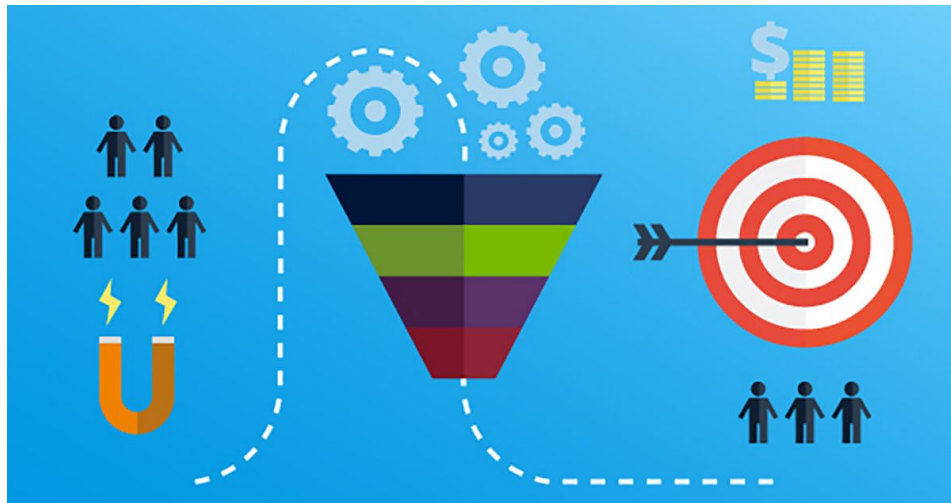


So what's different?

- Working with community members



What do I care about in the GitLab community?



- Awareness
- Feeling a sense of community & believe that “everyone can contribute”
- Converting casual to regular contributors

Metrics: First time contributors



GitLab.org > GitLab Community Edition > Merge Requests > !24431

Open

Opened 1 day ago by Mesut Güneş 1 commit completed

Edit

Close merge request

adding a spec for issues/310

What does this MR do?

This is adding a new spec to test the file size limit which is set in [account-settings](#) as referring in [account_and_limit_settings](#).

What are the relevant issue numbers?

[gitlab-qa#310](#)

Does this MR meet the acceptance criteria?

- ☐ Changelog entry added, if necessary
- ☐ Documentation created/updated via this MR
- ☐ Tests added for this feature/bug
- ☐ Tested in all supported browsers
- ☐ Conforms to the [code review guidelines](#)
- ☐ Conforms to the [merge request performance guidelines](#)
- ☐ Conforms to the [style guides](#)
- ☐ Conforms to the [database guides](#)
- ☐ Link to e2e tests MR added if this MR has [Requires e2e tests](#) label. See the [Test Planning Process](#)

Todo

Add todo



Assignee

Edit



Mesut Güneş
@gunesmes



Milestone

Edit

None

Time tracking



No estimate or time spent

Labels

Edit

1st contribution

Community contribution

QA

Quality

test

Lock merge request

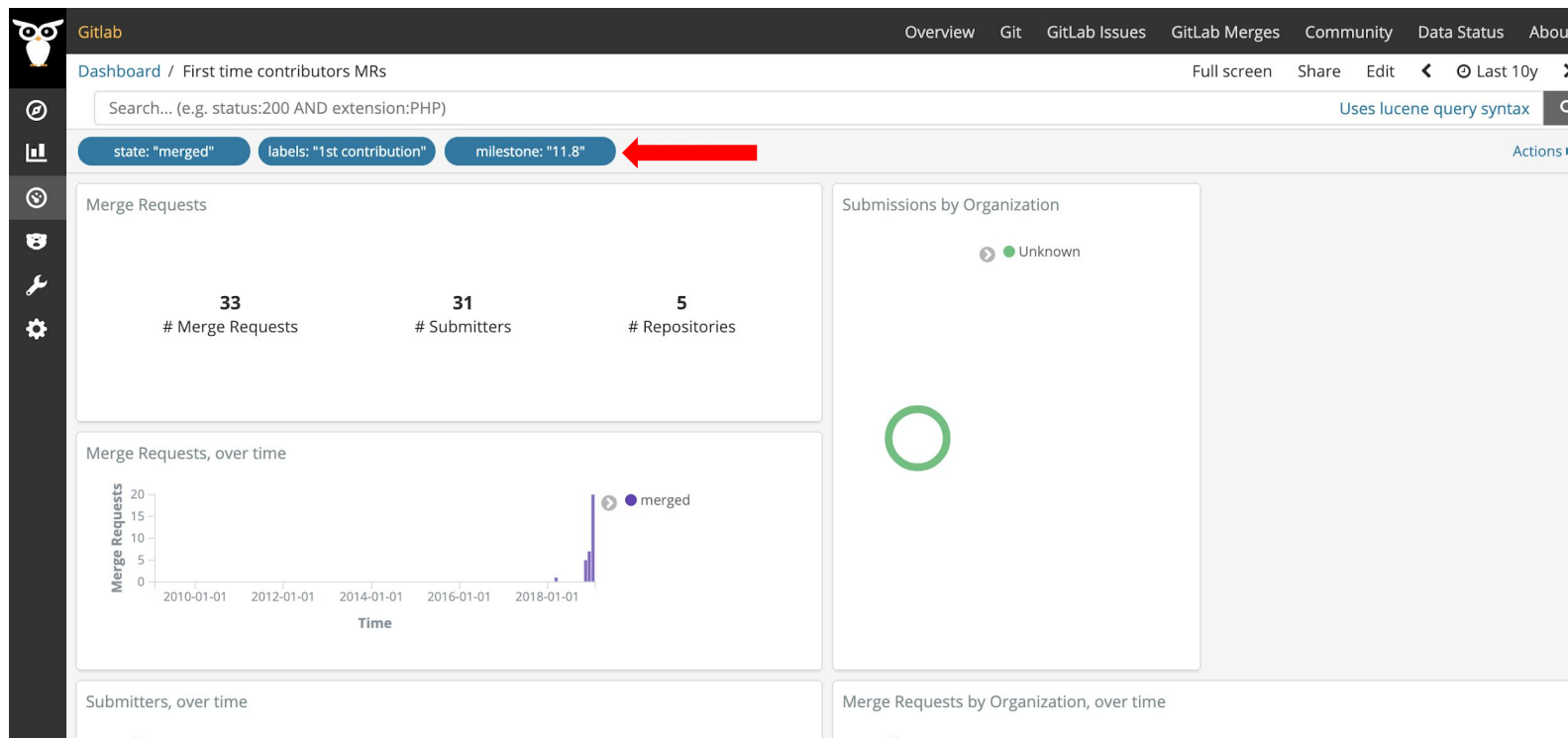
Edit

Unlocked

4 participants



Metrics: First time contributors



Metrics: Responsiveness to community contribution



Discussion 17

Commits 12

Pipelines 6

Changes 2

Show all activity ▾

✓ 1/1 discussion resolved



Ray Paik @rpaik commented 1 day ago

Added 11.8 🤔

Developer



Fatih Acet 🙌 @fatihacet commented 1 day ago

@rpaik sorry again but see this 🤔

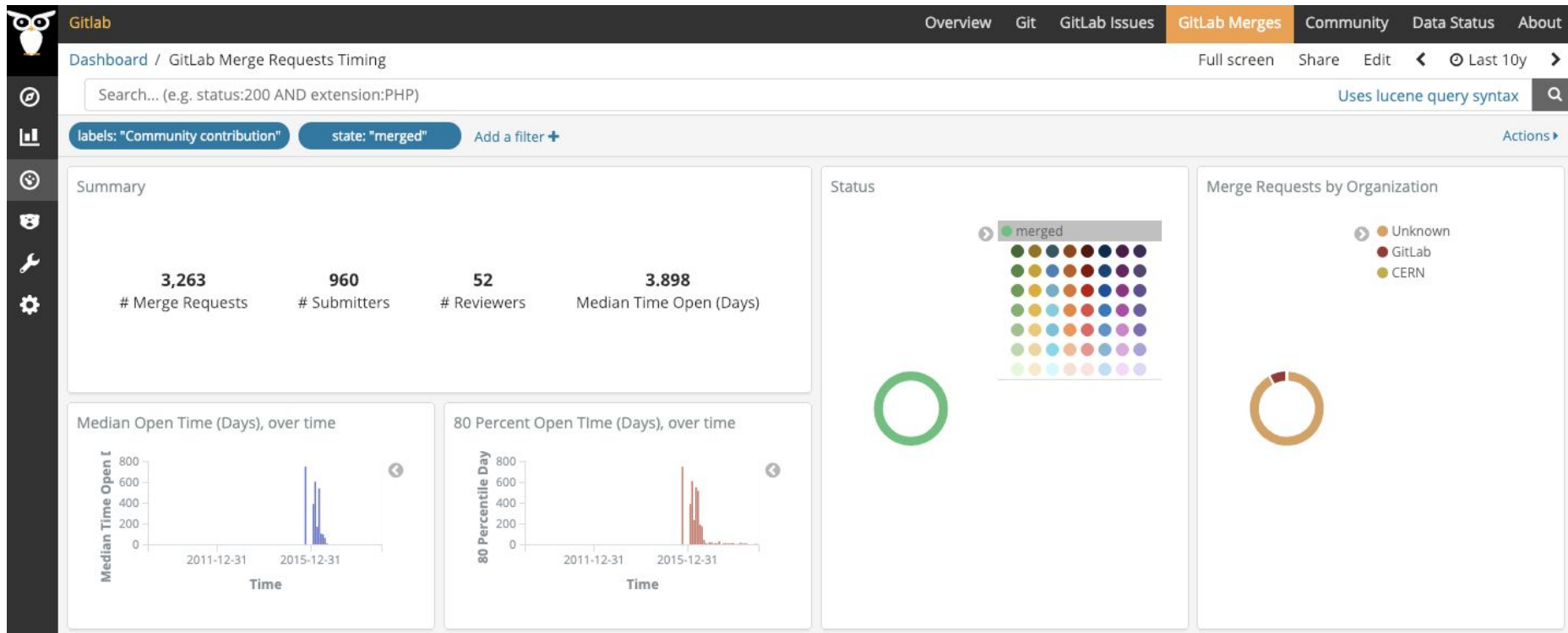
Maintainer



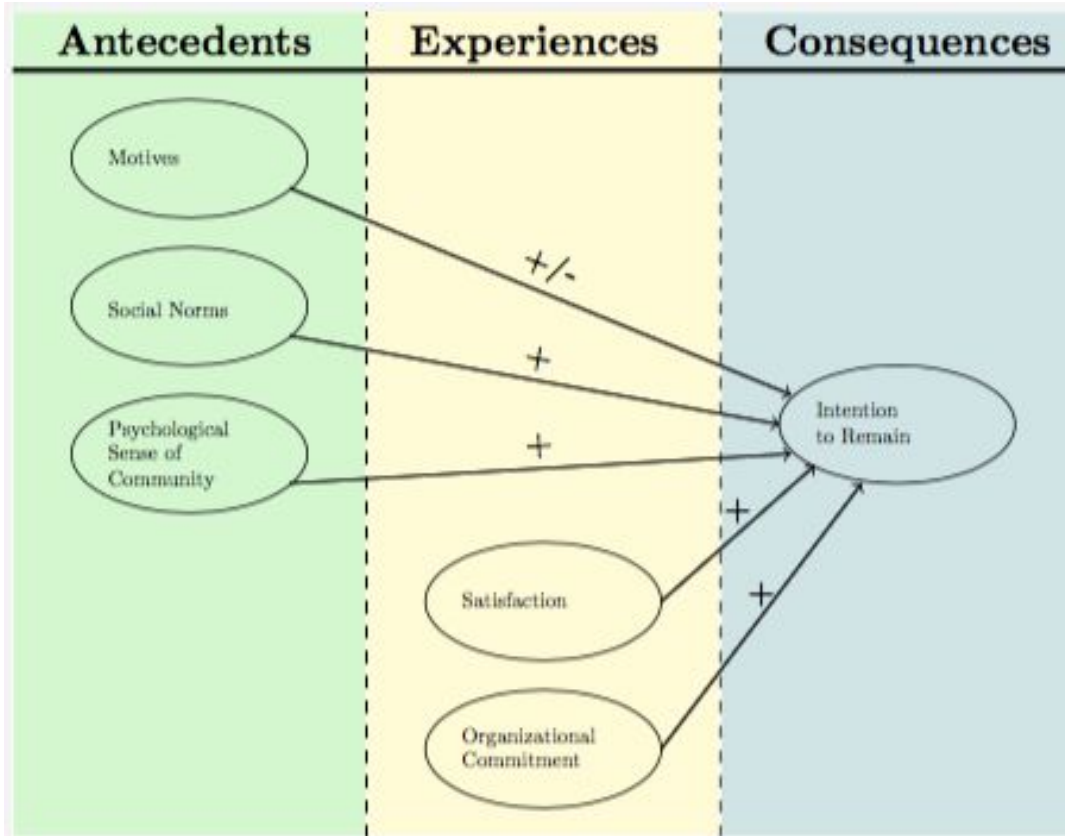
1



Metrics: Responsiveness to community contribution



Metrics: Converting casual contributors to regular contributors



Source:

<https://opensource.com/article/17/10/managing-casual-contributors>

Metrics: Converting casual contributors to regular contributors

